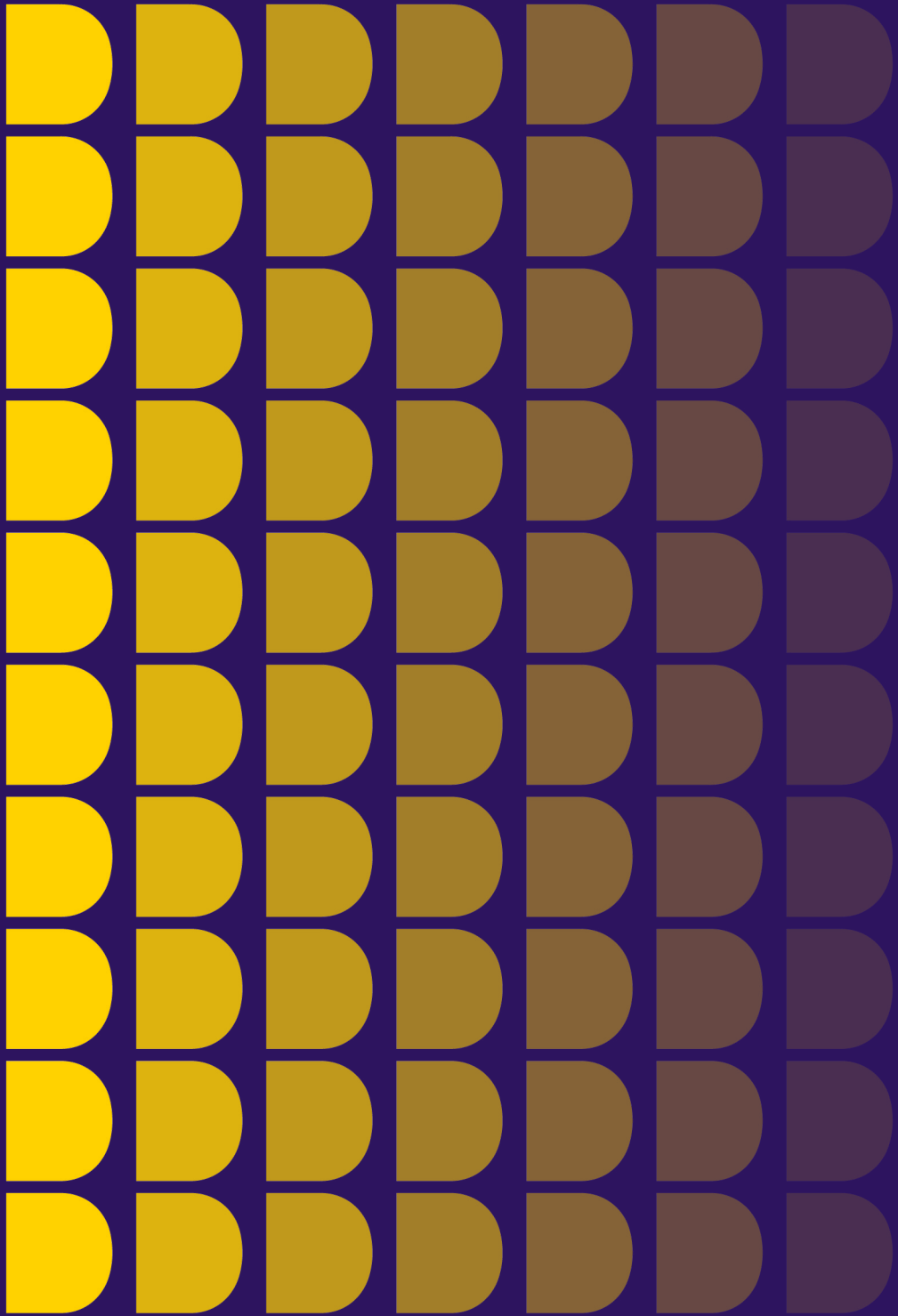




DATA  
PROVIDER.  
COM

**Take online brand protection to the next level**  
with structured web data from [Dataprovider.com](https://www.dataprovider.com)



# Contents

- About us 03
- Protect your brands online 04
- How anti-counterfeiting network React detects infringements 05
- Domain abuse tracking 06
- Combating counterfeits 07
- Getting detailed ownership information 08
- Uncovering networks 09
- Domain name portfolio management for corporate registrars 10
- Brand TLD monitoring 11
- Why our web data is more valuable than data from Google or Bing 12
- Automated monthly monitoring and reporting 13
- Dataprovider.com for other industries 14

## Dataprovider.com brings structure to global web data

We transform the abundance of web data on the internet into an ever-growing structured database that gives you actionable insights. Dataprovider.com helps all data-minded professionals, from marketers to IP specialists, from governments to investment bankers.

Take a look at our comprehensive stats and some of our features and products below to get a glimpse of what we can do for you.

750 million  
hostnames

3.1 billion  
web pages

Monthly and  
daily web  
traffic indices

Unique  
proprietary  
scores

200  
data fields

Statistics &  
trends

Corporate  
domain portfolio  
management

Tailor-made  
Dashboards

4 years of  
historical data

## Protecting your brands online

Dataprovider.com has the most extensive database of structured web data that enables you to monitor, enforce, and inform strategic decisions for your brand portfolio. With our web data, you can proactively identify and address threats, ensure compliance, and maintain the integrity and reputation of the brands you represent.

We give you the data you need to draw your own conclusions. Our web data unveils an otherwise hidden world, making it accessible and searchable for any professional in brand protection.

### Dataprovider.com helps you

- discover infringing websites and networks
- detect cybersquatting
- identify unauthorized or suspicious domains
- get the ownership information to take action
- track and secure brand domain portfolios

## How anti-counterfeiting network React improved their infringement detections

React is an international non-profit organization and anti-counterfeiting network. They are working for some of the biggest brands out there, keeping them safe and secure. To ensure the online presence of their brands is protected too, React has been using Dataprovider.com for over six years now.

Web data from Dataprovider.com helps React to identify fraudulent and counterfeit websites for well-known global brands in their portfolio. We are also key in detecting brand infringements, giving React the tools to find them, identify ownership details so they can take down malicious websites before they gain traction. With our tools, React can even identify and eliminate entire networks.

“The system’s high range of options and search capabilities are incredibly useful in our infringement detection efforts. Specifically, the monitoring, Trust Grade, and Cybersquatting features are very popular among our member brands, some of whom have been using them for years already.”

- Ivona Antic, Senior Brand Protection Analyst at React

## Find and track possible domain abuse

We make it easy for you to find domain names that match brand names, even if they are created using misspellings or resembling words of a brand. With the filters in our Search Engine, such as Cybersquatting Target, IDN (hostnames with special characters) or Domain name length, you instantly get a list of domains that pose a potential threat to your brands.

Filters: Cyber squatting target | IDN parts | 38 records

Search in content: [Search bar]

Cyber squatting target: [dropdown] is [dropdown] rolex.com

IDN parts: [dropdown] is not blank [dropdown]

Buttons: Add filter row, Reset filters

Sheet	Statistics	Maps	Trends	Churn	Views
Hostname	IDN parts	Cyber squatting target			
1	www.rolex.com	Main domain	rolex.com		
2	www.rolex.com	Main domain	rolex.com		
3	www.rolex.com	Main domain	rolex.com		
4	www.rolex.com	Main domain	rolex.com		
5	www.pokE.com	Main domain	rolex.com		
6	www.rolex.com	Main domain	rolex.com		
7	www.rolex.com	Main domain	rolex.com		
8	www.rolex.com	Main domain	rolex.com		
9	www.rolex.com	Main domain	rolex.com		
10	www.rolex.com	Main domain	rolex.com		
11	www.rolex.com	Main domain	rolex.com		

Filters: Domain | 7,337 records

Search in content: [Search bar]

Domain: [dropdown] starts with [dropdown] playstation

Buttons: Add filter row, Reset filters

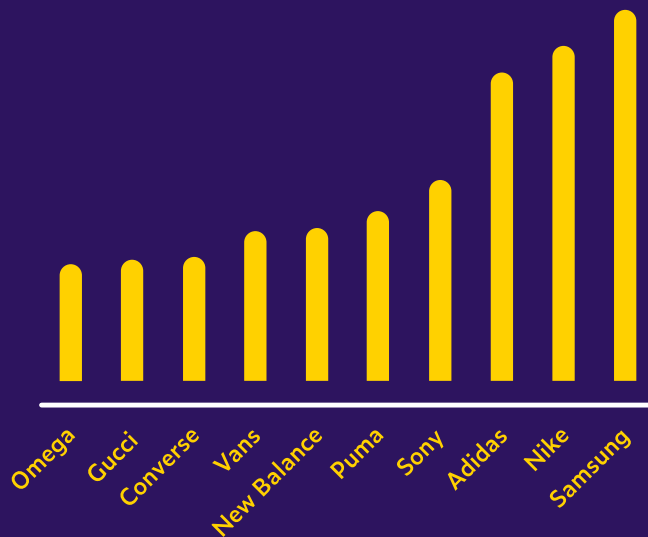
Sheet	Statistics	Maps	Trends	Churn	Views
Hostname	Domain				
1	playstationactiveservice.com	playstationactiveservice.com			
2	playstationsclub.com	playstationsclub.com			
3	www.playstationgamehouse.com	playstationgamehouse.com			
4	playstationshop-de.com	playstationshop-de.com			
5	www.playstation5xbxseriesplaystation...	playstation5xbxseriesplaystation-repairmemphis.com			
6	playstationportal.com	playstationportal.com			
7	playstation-store-direct.com	playstation-store-direct.com			
8	playstationprime.com	playstationprime.com			
9	www.playstationcanterbury.com	playstationcanterbury.com			
10	playstation-choice.de	playstation-choice.de			
11	playstationnurserytd.co.uk	playstationnurserytd.co.uk			
12	playstationshdmportrepair.com	playstationshdmportrepair.com			

## Combating counterfeits made easy

Dataprovider.com offers a comprehensive solution to monitor and combat the sale of counterfeit products online. We scan and classify a vast array of e-commerce websites on a monthly basis. Our AI-based proprietary Trust Grade is a game-changer in identifying illicit online stores selling your brands' counterfeit goods.

Every e-commerce site we detect is assigned a Trust Grade rating, ranging from A to F, indicating how trustworthy a website is. Our machine learning algorithm considers information such as the presence (or lack) of an SSL certificate, ownership details, hosting provider and a range of other technical and content related indicators. Searching for a brand name in combination and filtering on just the websites with a low Trust Grade, you can detect unauthorized sellers and counterfeit listings.

**Top 10 Brands by number of Online Store with a low Trust Grade (Nov 2023)**



## Get detailed domain ownership information

To take down cybersquatters and fraudulent stores, you need to know whom to contact. We provide a wide range of detailed information, such as the hosting company, registrar, WHOIS information and other relevant contact details. With that data, you have all the information you need to take swift action in taking websites down or providing your clients with the information to do so themselves.

**Primary address**

**Secondary addresses**

**WHOIS email addresses**

**WHOIS Registrar**

**Hosting company**

**Telephone numbers**

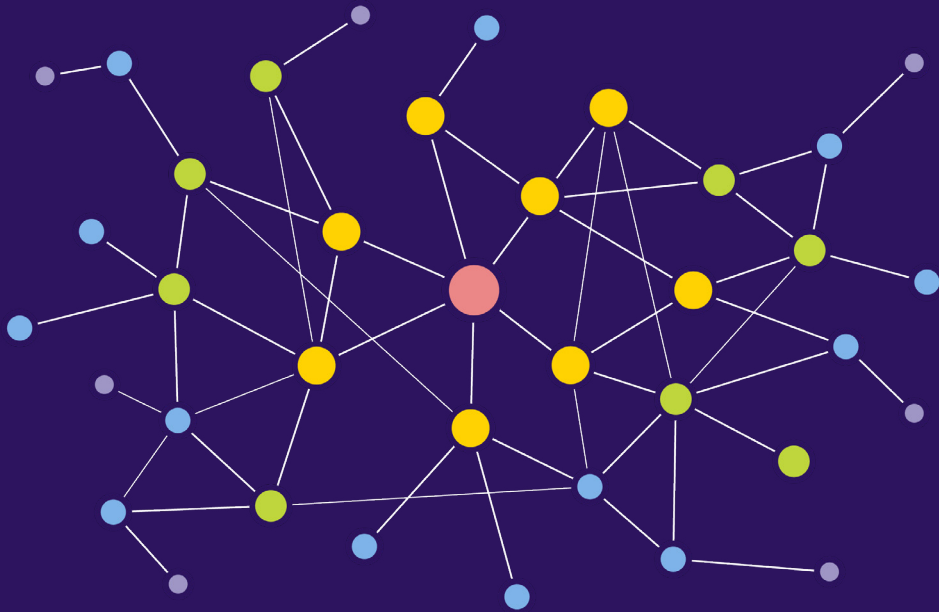
**WHOIS organisation**

## Easily find large networks of malicious websites

With our advanced Ownership and Similar Homepages features, you can uncover networks of malicious domains linked by common ownership or creation patterns.

**Ownership** lets you delve into the interconnected web of domains owned by the same entities. With **Similar Homepages**, you can easily discover domains using the same tech and a comparable HTML structure. This digital fingerprint matching signals a website is most likely a copy, a strategy that is often used by infringers.

This dual approach offers a unique advantage in finding larger networks of malicious websites.



## Domain name portfolio management for corporate registrars

With our Know Your Customer product, you can keep track of all domains in your portfolio and monitor activity, taking full control of all your assets. You can spot unused but active domains, or websites with outdated software posing a security risk. By complementing your data with our web data, you can connect the dots and see the entire structure for a brand or collection of brands for one client.

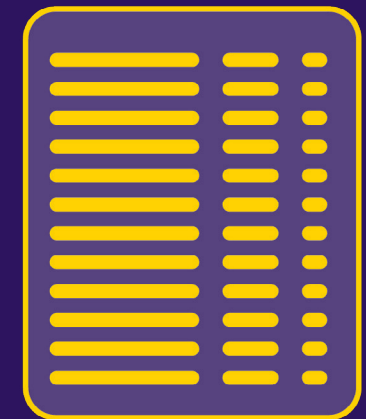
Upload your clients' domain names, and we will do a private crawl for you, as often as you want and tailored to your needs. The results are only available for you to use. With our API you can connect this functionality to your systems so you can share the data with your own clients.

You can even check the security measures set in place for a domain. Help your clients keep their domains safe by tracking open ports, outdated software, and much more. You can even see if they are using the right SSL vendor and spot upsell opportunities.

### Your dataset

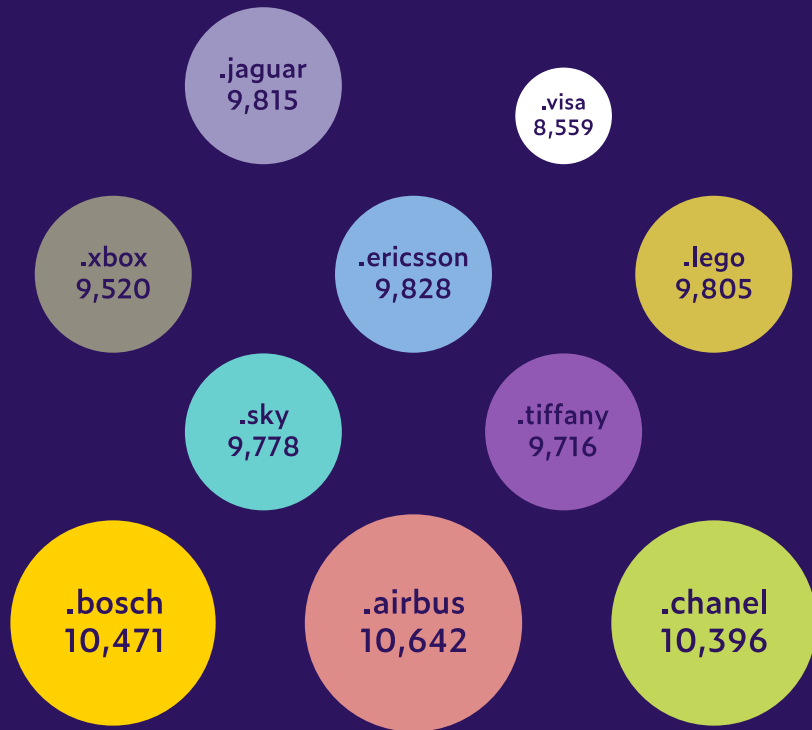


### Enhanced by us



## Monitor domain usage statistics for brand TLDS

We currently index domains for virtually all individual brand TLDs. With our data, you can monitor domain usage statistics for clients that have registered their brand TLD. Creating monthly reports, you quickly gain insights into trends of brands' TLDs and their competitors. With these insights, you can help your clients develop new strategies for how to maximize the potential of their brand TLD.



Number of domains for select brand TLDs within Dataprovider.com  
November 2023

## Why our web data is more valuable than data from Google or Bing

Most other web data suppliers are using the Google or Bing API to gather their information. But consumer focused search engines, like Google and Bing, tend to hide infringing websites from their results and are not giving you a complete picture of the web. And next to that, you don't have any options to filter the results based on your needs.

At Dataprovider.com, we crawl the web ourselves on a monthly basis, adding new hostnames as they pop up. From this monthly crawl, we create a structured and searchable database, making it possible for users to filter on any combination they require. That's why you can use our data in a way that is useful for you. With Dataprovider.com, you can detect infringing websites and even networks of websites that will not show up in regular search engines.

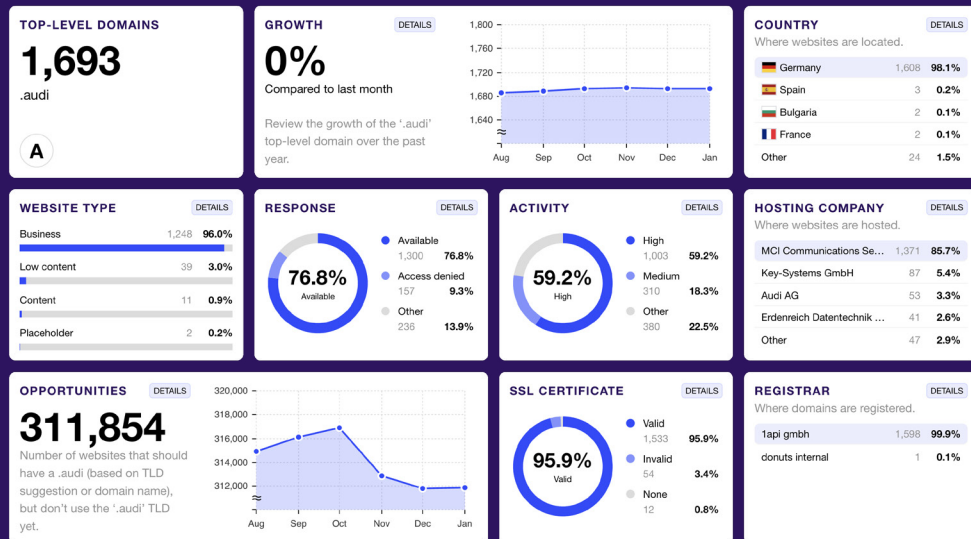
Search column	Count
<input checked="" type="checkbox"/> DOMAIN	15 out of 15 >
<input checked="" type="checkbox"/> STATUS	13 out of 13 >
<input checked="" type="checkbox"/> CONTACT	15 out of 15 >
<input checked="" type="checkbox"/> BUSINESS	21 out of 21 >
<input checked="" type="checkbox"/> DUNS	2 out of 2 >
<input checked="" type="checkbox"/> ECOMMERCE	10 out of 10 >
<input checked="" type="checkbox"/> CONTENT	23 out of 23 >
<input checked="" type="checkbox"/> ENGAGEMENT	10 out of 10 >
<input checked="" type="checkbox"/> MARKETING	8 out of 8 >
<input checked="" type="checkbox"/> SOCIAL	8 out of 8 >
<input checked="" type="checkbox"/> TECHNICAL	19 out of 19 >

WHOIS	Count
<input checked="" type="checkbox"/> Registrar	0 out of 14 v
<input checked="" type="checkbox"/> Reseller	
<input checked="" type="checkbox"/> Whois name	
<input checked="" type="checkbox"/> Whois organisation	
<input checked="" type="checkbox"/> Whois address	
<input checked="" type="checkbox"/> Whois zip code	
<input checked="" type="checkbox"/> Whois city	
<input checked="" type="checkbox"/> Whois country	
<input checked="" type="checkbox"/> Whois phone number	
<input checked="" type="checkbox"/> Whois email address	
<input checked="" type="checkbox"/> Whois creation date	
<input checked="" type="checkbox"/> Whois expiration date	
<input checked="" type="checkbox"/> Whois update date	
<input checked="" type="checkbox"/> Whois IANA ID	

# Automated monthly monitoring and reporting

With our Dashboards, you can create custom data visualizations to track and share. You can set up personal Dashboards for each brand to get an easy overview of some of the key metrics you want to track. You can choose which data is most important for you to showcase it here.

You can even share a Dashboard with your team or use it to send to your brands, so they stay updated on your progress.



# Dataprovider.com for other industries

Structured web data is valuable for a wide range of industries. No matter what business you are working in, if you need reliable and highly detailed web data, Dataprovider.com is the go-to source for any organization or business. We even provide data for academic research.

Our data is used by a wide range of organizations, including some of the biggest names, like PayPal, GoDaddy, and M Science. Curious which industries are already using our data to improve their performance? Take a look at the list below.

Asset Management

Business Information

Registries & Registrars

Brand Protection

Payment Service Providers

Cybersecurity

Academic Research

Public Sector

Want to know how Dataprovider.com can help you? Reach out to us, and we'll be happy to set up a personal demo!

info@dataprovider.com



*"The entire team has really appreciated the time saved by using Dataprovider.com. Above all, we've been able to improve and accelerate our infringement detection greatly. The data provided by Dataprovider.com is crucial for companies operating in brand protection. "*

**- Ivona Antic, Senior Brand Protection Analyst at React**

Trusted by:

React



GoDaddy™

Google



PayPal

[info@dataprovider.com](mailto:info@dataprovider.com)

Van Elmpstraat 10  
9723 ZL  
Groningen  
The Netherlands

Weesperplein 4b  
1018 XA  
Amsterdam  
The Netherlands